



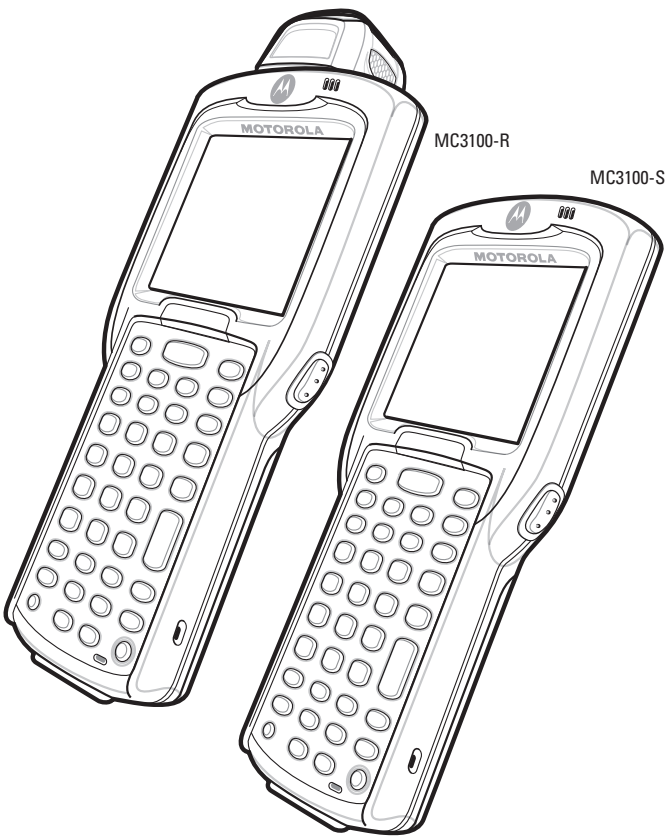
MC3100 Series

Quick Start Guide

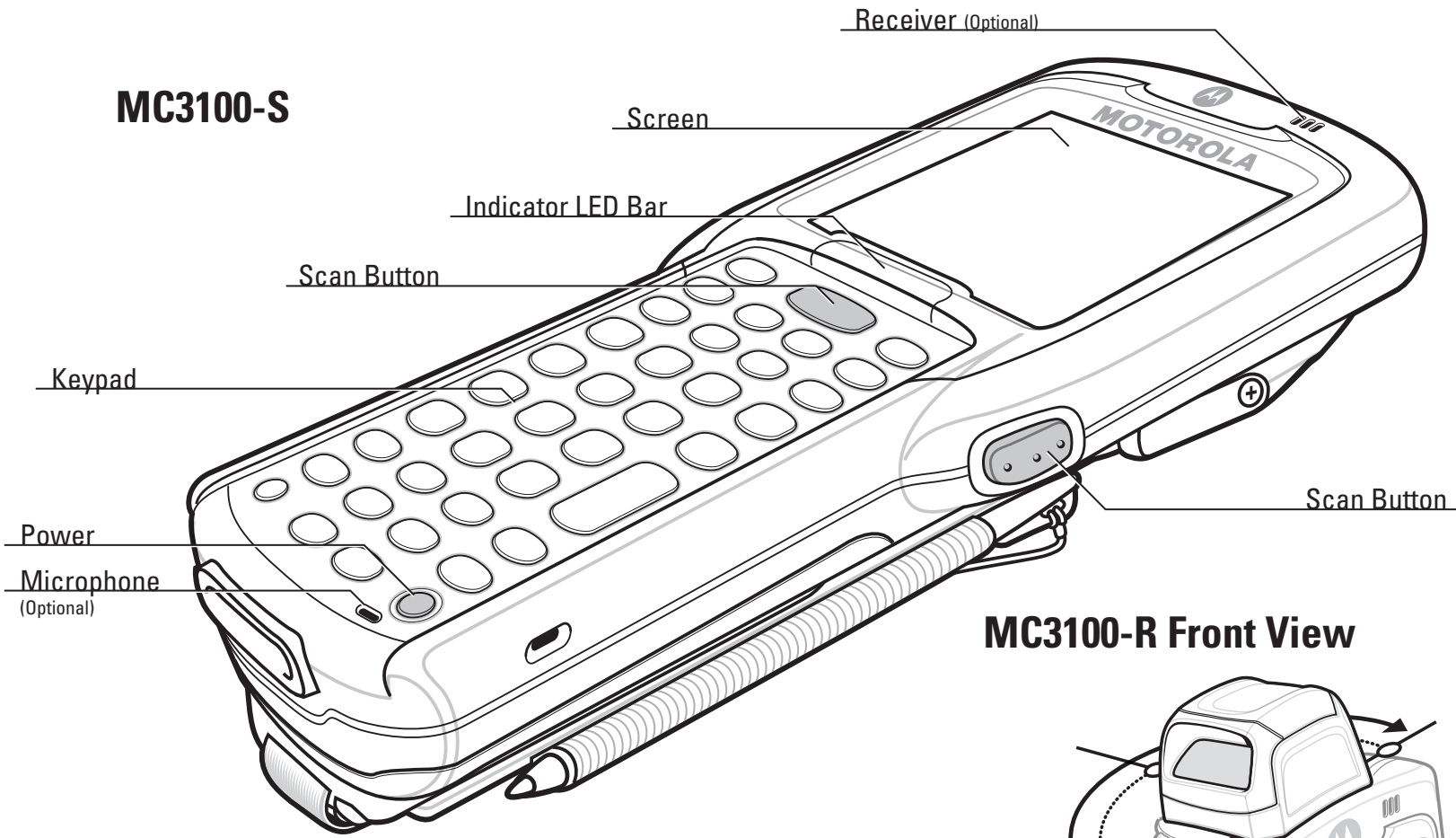
<http://www.motorola.com/mc3100> See User Guide for more information
This guide is applicable to all MC31XX-S/R series products

FEATURES

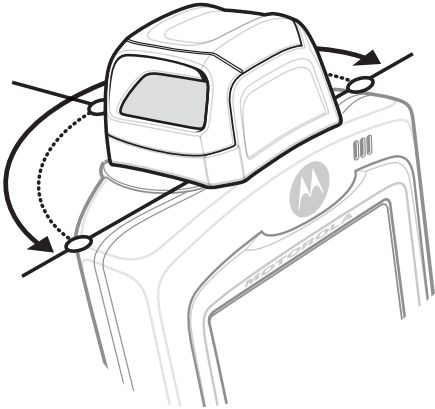
POST IN WORK AREA



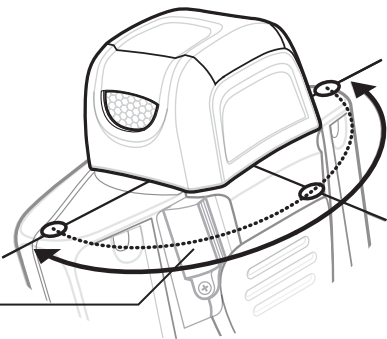
MC3100-S



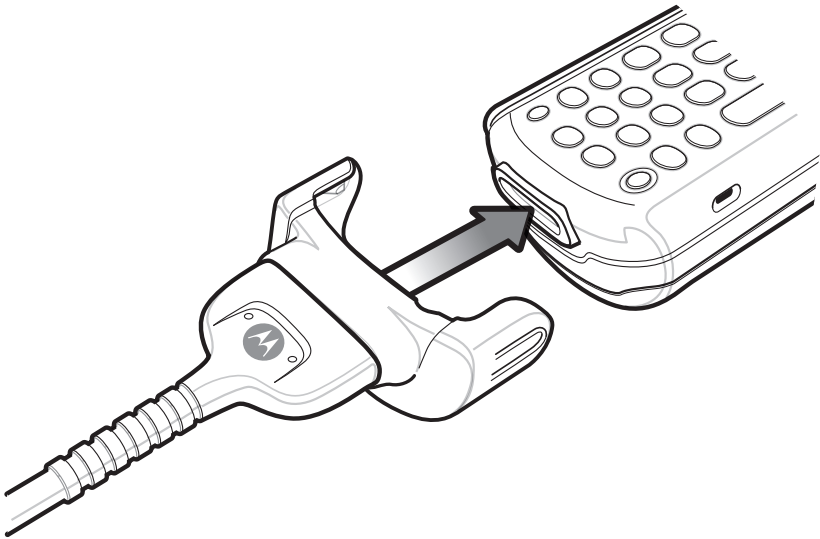
MC3100-R Front View



MC3100-R Back View

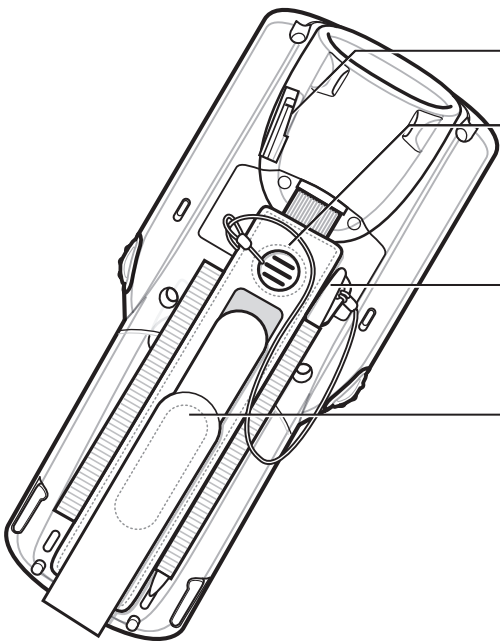


Cable Installation

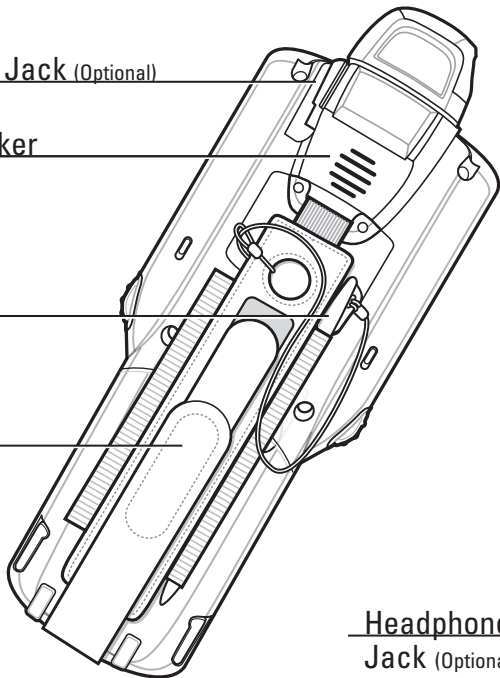


Comm/Charge Cables

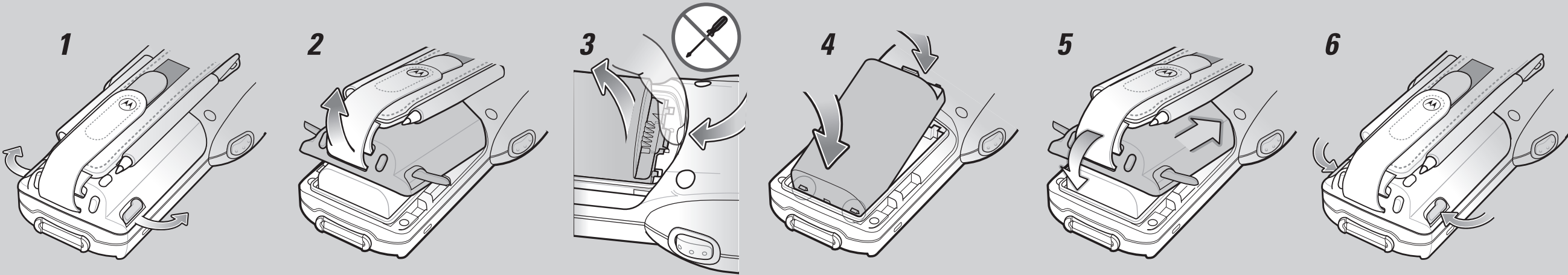
MC3100-S Back View



MC3100-R Back View

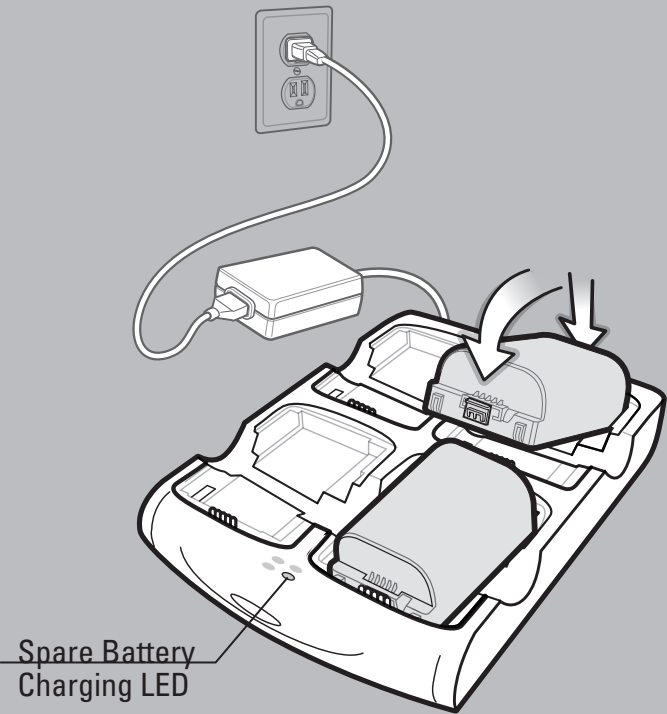


BATTERY REMOVAL/INSTALLATION

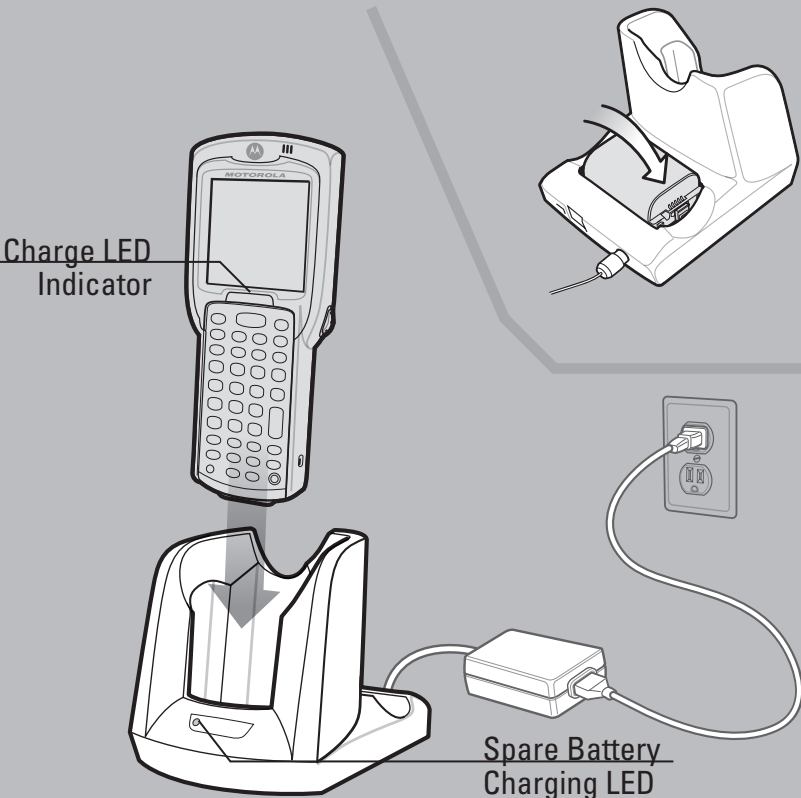


CHARGING INSTRUCTIONS

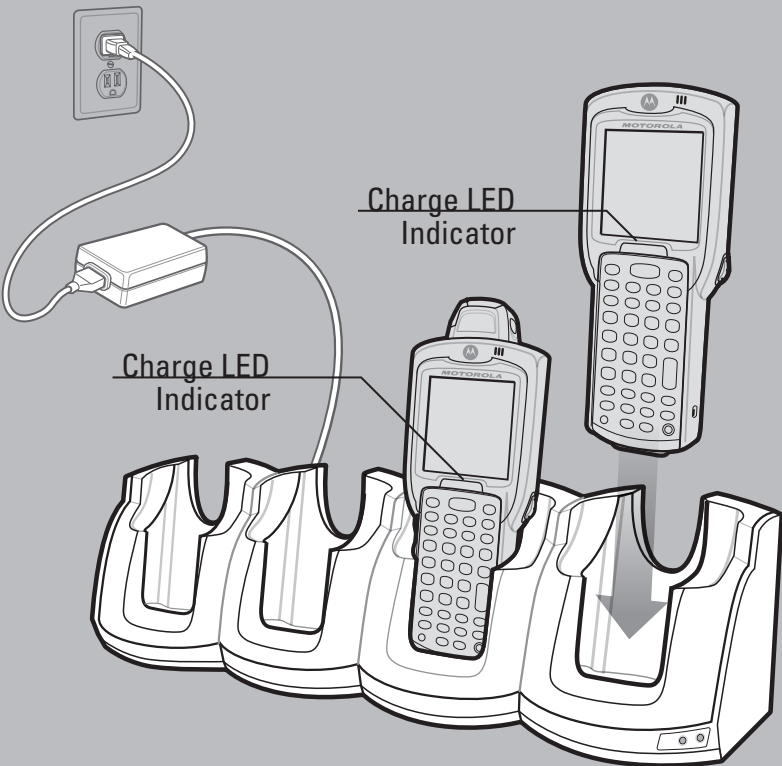
LED Indicators: Slow Flash = Normal Charge | Solid Amber = Full Charge | Fast Flash = Charging Error



Four Slot Spare Battery Charger



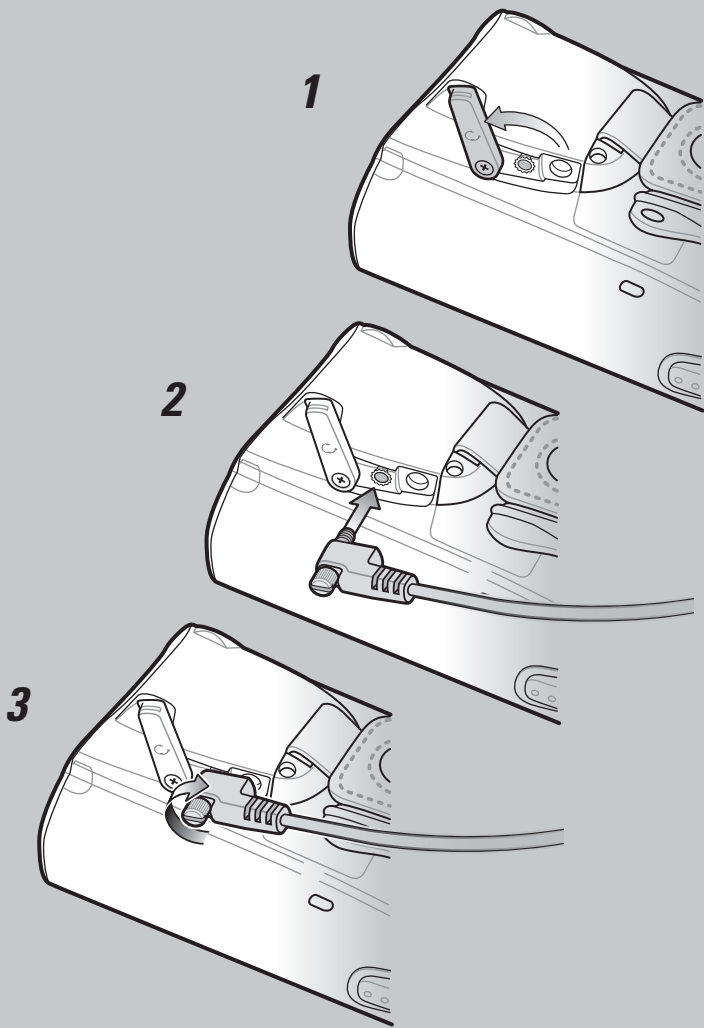
Single Slot Serial/USB Cradle



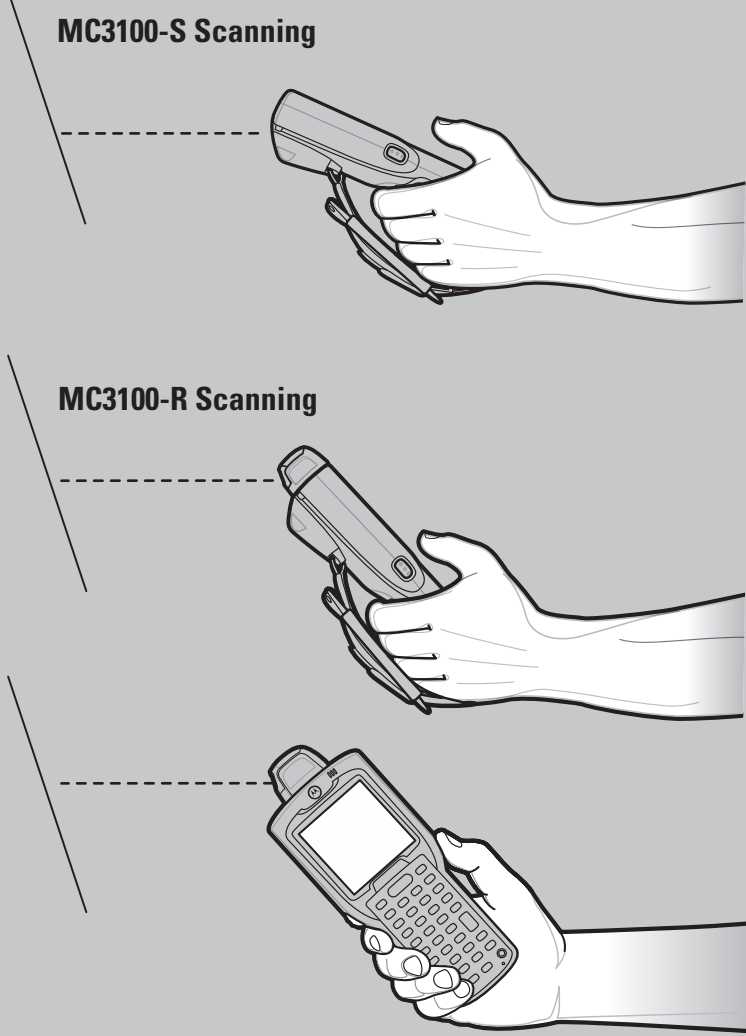
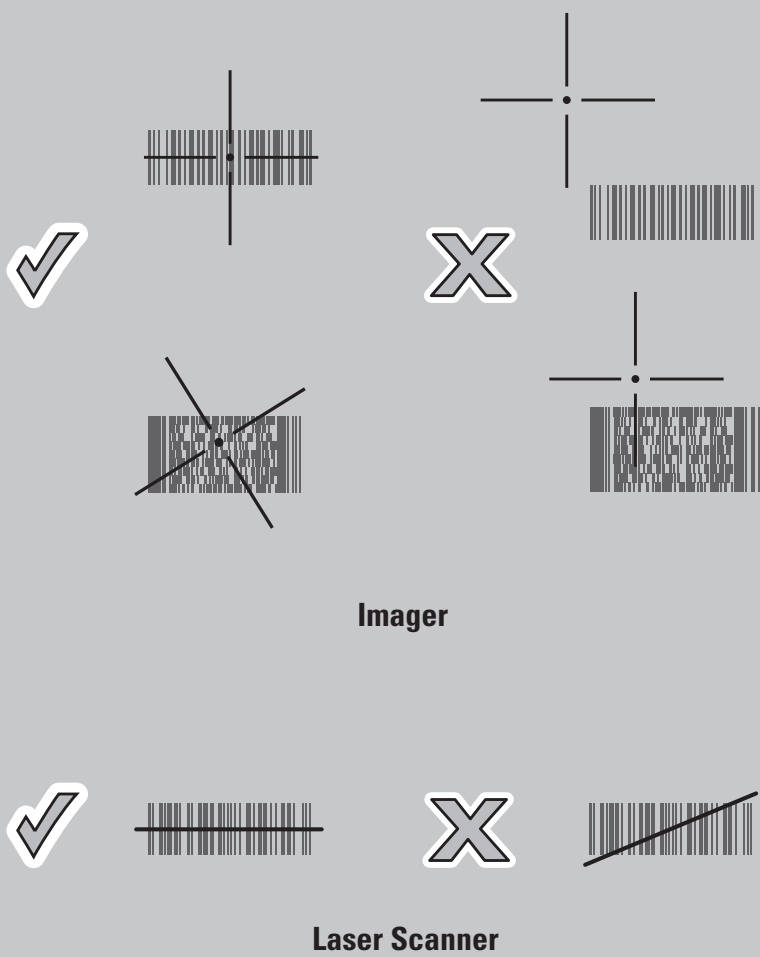
Four Slot Cradles

Charge-Only Cradle and Ethernet Cradle

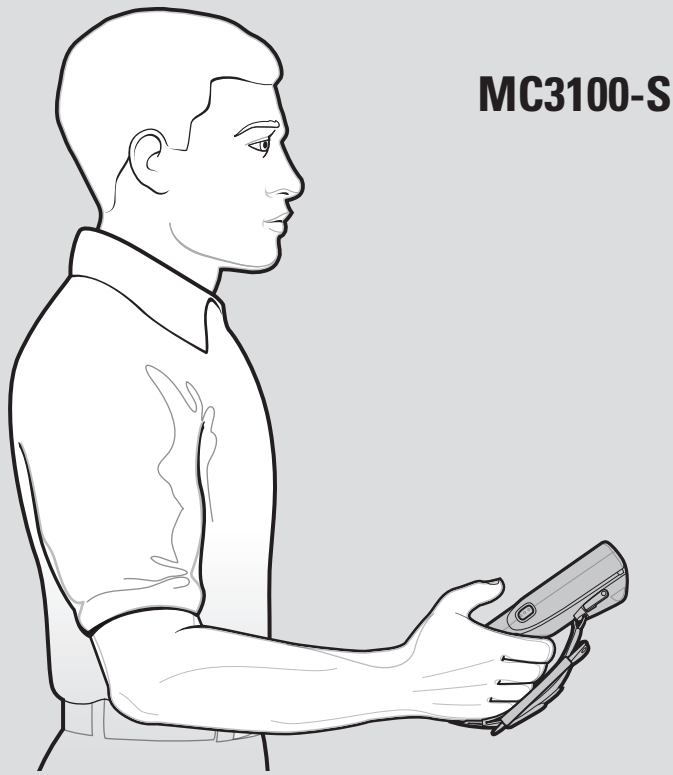
HEADSET CONNECTION



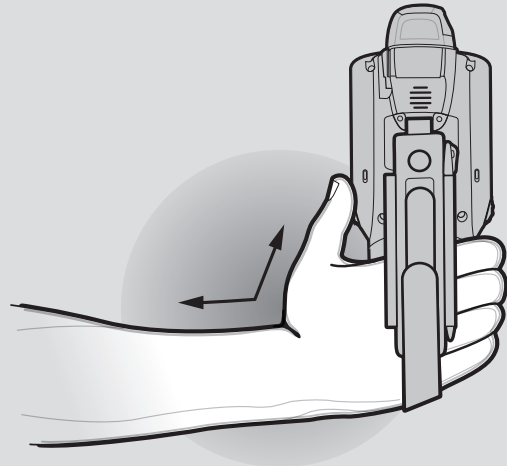
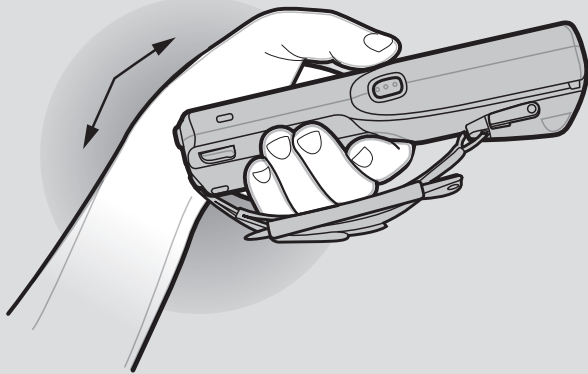
OPTIMUM IMAGING AND SCANNING POSITIONS



OPTIMUM UPRIGHT BODY POSTURES



Avoid Extreme Wrist Angles



OPTIMUM BODY POSTURE

Optimum Body Posture for Low Scanning



Alternate left and right knees
Alternate left and right hands



Alternatete left and right hand

Optimum Body Posture for High Scanning



Use a ladder

Taking breaks and task rotation recommended

Local Contact: _____