

Quick Start Guide

Installing Your Software

1. Read the manual for your Honeywell device in order to familiarize yourself with your new hardware, including charging the battery, plugging into your PC with either a USB cable or cradle and how to establish a connection to your PC using **ActiveSync** (Windows 2000/XP) or **Windows Mobile Device Center** (Vista/Windows 7).
2. After establishing a connection between your device and your PC via **Activesync** or **Windows Mobile Device Center**, locate the icon of your Honeywell Dolphin device on your PC. This should appear in Windows Explorer much like an inserted CD or external thumb drive would.
3. Open the device folder by double clicking the icon.
4. Drag the **EasyRetail-xx.CAB** file to your device. The full installer name will be dependent upon whether you purchased a Zebra printer enabled version or the non-print version. Another variable depends on whether you are using a **Windows Mobile** or **Windows CE** operating system on your Dolphin device. As a result, your CAB file will be one of the following:
 - a. **EasyRetail-print-CE.CAB**
 - b. **EasyRetail-no-print-CE.CAB**
 - c. **EasyRetail-print-WM.CAB**
 - d. **EasyRetail-no-print-WM.CAB**

NOTE: This .CAB file is an installer that contains **TracerPlus Professional** and the specific configuration of your **Easy Retail** application. Do not install **TracerPlus** mobile software separately.

Windows CE

1. After copying the file, you can disconnect your device from your PC.
2. Tap the **My Device** icon on your Dolphin screen to open the root folder of your device.
3. Locate the .CAB file you previously copied, then tap the file to begin installation.
4. Follow the installation prompts.

Windows Mobile

1. After copying the file, you can disconnect your device from your PC.
2. Go to the **File Explorer** on your mobile device, and then navigate to the **My Device** folder.
3. Locate the .CAB file you previously copied, then tap the file to begin installation.
4. Follow the installation prompts.

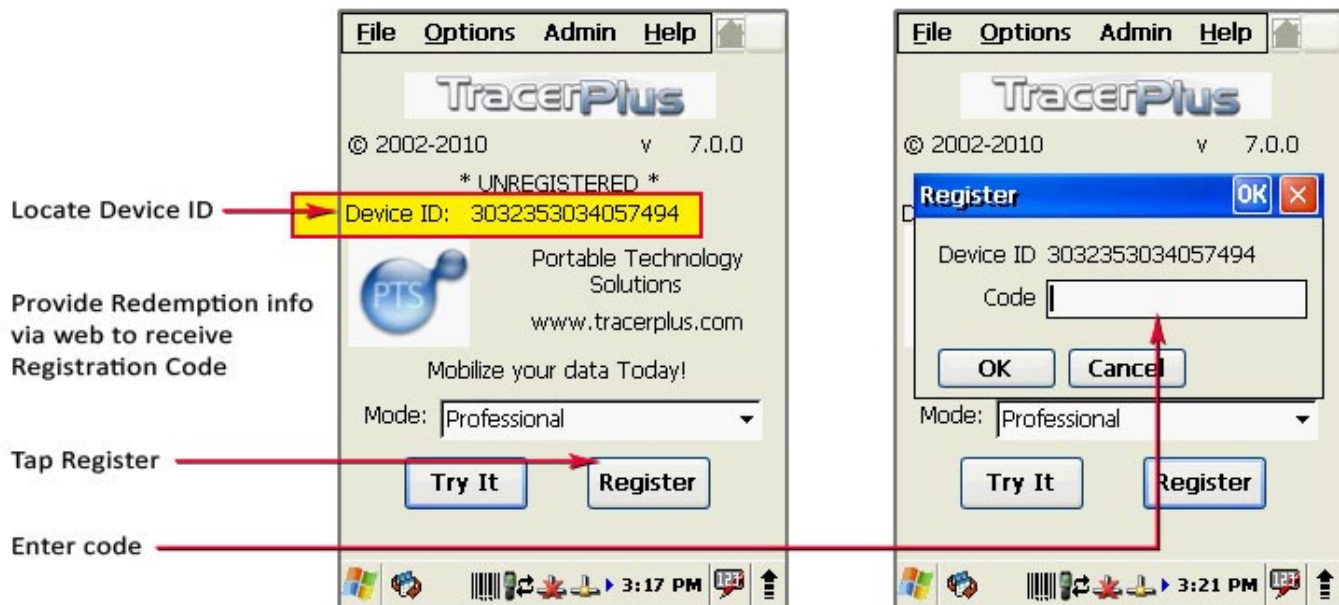
Registering Your Software

After purchasing **TracerPlus Easy Retail**, the software must be registered. Since **TracerPlus Easy Retail** is based on **TracerPlus Professional** mobile client software, the registration process will follow a similar process with only minor changes.

1. Following your purchase, you will be provided with a **Redemption Link** via email.
2. Click on the **Redemption Link** to open the tracerplus.com registration web page. Redemption Link information will be pre-populated in the corresponding fields.
3. Launch **TracerPlus** on your device, then select **Professional** from the operating mode dropdown and click the **Register** button. For step-by-step instructions on launching your software, see page 3.
4. Note and enter the **Device ID** found on this screen exactly as it appears (case sensitive, no extra spaces) in the appropriate field of the web page form, then enter the remaining information.
5. Click the **Request Registration Information** button.
6. A **Registration Code** will be sent to your email address.
7. Enter this code into the **Code** field on the registration screen of your device.

What is a Redemption Link?

The redemption link is a unique ID generated for each license of our software you have purchased. By entering the redemption link we can send your registration code even if you have lost it in the past. The redemption link will be emailed to you shortly after purchase.




Using Your Software


Launching Your Software

The process for launching your software will depend on whether you are using a Windows Mobile Device or Windows CE device.

Windows CE

1. Power up your mobile device.
2. Go to the Start Menu. 
3. Select **Program Files** then locate the TracerPlus application and tap to open.
4. As described above, this will open the registration/trial screen. Once registered, the application will open the Launcher/Home screen.

Windows Mobile

1. Power up your mobile device.
2. Go to the Start Menu. 
3. Select **Programs**, then scroll down and select (Tap) **PTS TracerPlus**.
4. As described above, this will open the registration/trial screen. Once registered, the application will open the Launcher/Home screen.

Sample Data Files

TracerPlus Easy Retail includes sample data in order to illustrate the application's processes. This data is automatically imported into the application's data tables at the time of installation. This data can be viewed in table form (Figure 1) by selecting the **View Inventory** icon at the lower left.

Sample data can be deleted by tapping **Options > Delete All** when in the **View Inventory** data table.

One of the central advantages of using Easy Retail is the ability to sync data with an existing inventory database. This data can be transferred manually via text files (see page 9 for instructions).

PTS also offers the ability to automate these processes in a number of ways. For more information on the options for syncing your data, visit:

[Options for Syncing TracerPlus Data with Your Database](#)



Figure 1
Launcher / Home Screen
(Windows CE shown)


Item #	Image	Desc...	On ...
123123	123...	Men'...	15
124124	124...	Men'...	10
125125	125...	Wo...	5
126126	126...	Men'...	10
127127	127...	Men'...	20

Figure 2
View Inventory Screen showing
Sample data.
(Windows CE shown)

Performing a Price Check or Stock Check



As mentioned above, **TracerPlus Easy Retail** includes sample data as part of the initial installation. This quick start guide also includes sample barcodes that coincide with this sample data (page 10). As a result, scanning these codes will illustrate the functionality of the **Easy Retail** application by populating your form when scanned.

1. Tap the **Price/Stock Check** icon on the launcher screen to open the data entry form. (Figure 3)
2. Scan a product barcode or enter the code via the keypad. If entering via a keypad, you must follow by pressing the **Ent** key.
3. To auto-populate the sample data in your entry form, scan one of the sample barcodes (i.e. 123123) mentioned above. This will auto-populate the product description, a photo of the item, the available stock and the current price (Figure 4).
4. In addition to receiving this information, a user with the optional printing functionality can re-print a new price label if needed. To do so, tap the **Re-Print Label** button.
5. Tap the **Exit** button or the **Home** icon () to return to the launcher screen.

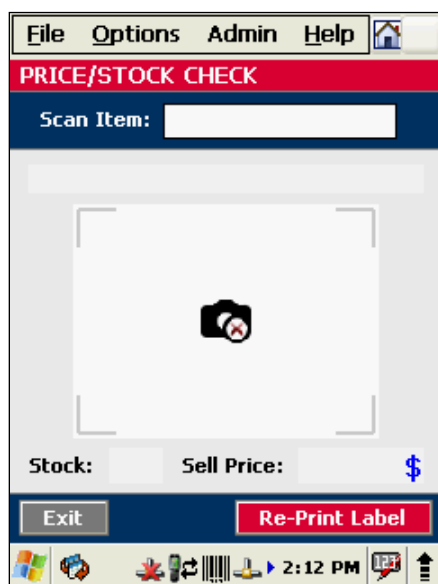


Figure 3
Price/Stock Check Screen
Before scanning a barcode.
(Windows CE shown)




Figure 4
Price/Stock Check Screen
With auto-populated data.
(Windows CE shown)

Performing a Price Markdown



Unlike the **Price/Stock Check** form which is primarily read-only, the **Price Markdown** form is designed to offer the ability to change the pricing on a given item. Submitting the new price will update the local database on the device. In the case of the print enabled version of Easy Retail, this form also enables on-site printing of replacement price labels.

As with the **Price/Stock Check** form, above, sample data and barcodes are available to demonstrate the functionality of the markdown form.

1. Tap the **Price Markdown** icon on the launcher screen to open the data entry form (Figure 5).
2. Scan a product barcode or enter the code via the keypad. If entering via a keypad, you must follow by pressing the **Ent** key.
3. To auto-populate the sample data in your entry form, scan one of the provided sample barcodes mentioned above (i.e. 124124). This will auto-populate the product description, and the current price (Figure 6).
4. To change the price on an Item, enter the new price into the **Markdown Price** field. Then tap the **Submit Button**. The print enabled version of this software (shown below) will then print a new price label. In this instance, the Submit button reads **Submit and Print**.
5. Tap the **Exit** button or the **Home** icon () to return to the launcher screen.

The screenshot shows the 'PRICE MARKDOWN' screen. At the top is a menu bar with 'File', 'Options', 'Admin', 'Help', and a home icon. Below the menu is a 'Scan Item:' field with a text input box. Underneath is a 'Description:' field with a larger text input box. Below that are 'List Price:' and 'Markdown Price:' fields, each with a text input box. At the bottom are two buttons: 'Exit' (red) and 'Submit and Print' (blue). The status bar at the very bottom shows the date '4/06/2011', 'Records: 2', and a system tray with various icons and the time '9:59 AM'.

Figure 5
Price Markdown Screen
Before scanning a barcode.
(Windows CE shown)

The screenshot shows the 'PRICE MARKDOWN' screen with auto-populated data. The 'Scan Item:' field now contains the value '124124'. The 'Description:' field is populated with 'Men's Khaki Pants - 38W x 30L'. The 'List Price:' field is populated with '39.99'. The 'Markdown Price:' field remains empty. The buttons 'Exit' and 'Submit and Print' are still present. The status bar at the bottom shows the date '4/05/2011', 'Records: 2', and a system tray with various icons and the time '7:06 PM'.

Figure 6
Price/Markdown Screen
With auto-populated data.
(Windows CE shown)

Performing an Inventory Count



Easy Retail includes an **Inventory Count** form. This form requires no manual interaction on the part of the user other than scanning an item. Upon scanning a code, the quantity of the item that corresponds to that code is increase by one. The record is automatically submitted and the form is quickly reset to receive the next scan.

As with the **Price/Stock Check** and **Price Markdown** forms, sample data and barcodes are available to demonstrate the functionality of the **Inventory Count** form. However, since the purpose of the **Inventory Count** is to quickly add to a total count of specific items for later viewing, the speed of the process provides only a momentary notification before submitting the record and awaiting the next scan.


1. Tap the **Inventory Count** icon on the launcher screen to open the data entry form. (Figure 7)
2. Scan a product barcode or enter the code via the keypad. If entering via a keypad, you must follow by pressing the **Ent** key.
3. To auto-populate the sample data in your entry form, scan one of the provided sample barcodes mentioned above (i.e. 125125). This will auto-populate the **Qty:** field with the existing quantity of the related item +1.
4. The form will quickly auto submit this number, readying the device for the next scan.
5. Additional scans of the same code will subsequently increase the quantity by one.
6. Tap the **Exit** button or the **Home** icon () to return to the launcher screen.


Figure 7
Inventory Count Screen
Before scanning a barcode.
(Windows CE shown)

Figure 8
Inventory Count Screen
During scan. Only visible momentarily.
(Windows CE shown)

Viewing Inventory Data on the Device



As mentioned on page 3, **Easy Retail** provides a **Data View** screen along with the three data entry forms. This view allows the user to review multiple records on the device.

1. Tap the **View Inventory** icon to open the data table to review the existing data (Figure 9).
2. With **Easy Retail**, this screen is intended for viewing data only. As a result, the **Edit** button serves only to provide a complete view of an individual record. The **New** button is also disabled.
3. However, The **Delete** button will allow users to delete records. That functionality can be restricted by enabling passwords. See **page 8** for instructions on adding password protection to your application.
4. Tap the **Home** icon () to return to the launcher screen.

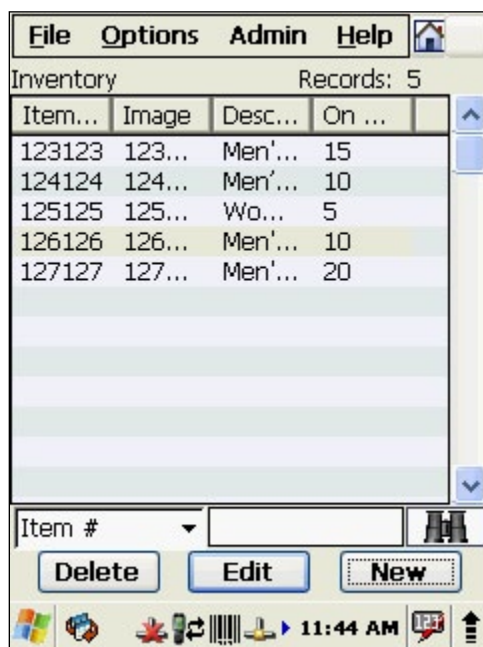



Figure 9
The View Inventory Screen
With sample data.
(Windows CE shown)

Enabling Password Protection

In some cases, users may wish to restrict the ability to perform certain functions such as the ability to delete records. This can be accomplished by requiring a password to complete the task.

1. To access Password settings tap the **Admin** menu option, then tap **Passwords** (Figure 10).
2. This will open the Password Settings window (Figure 11). Enable the **Use Passwords** checkbox and then enter the password to be used in the supplied field (Figure 12).
3. Select the functions to be password restricted.
4. Tap **Done** to save the settings.
5. Tap the **Home** icon () to return to the launcher screen.

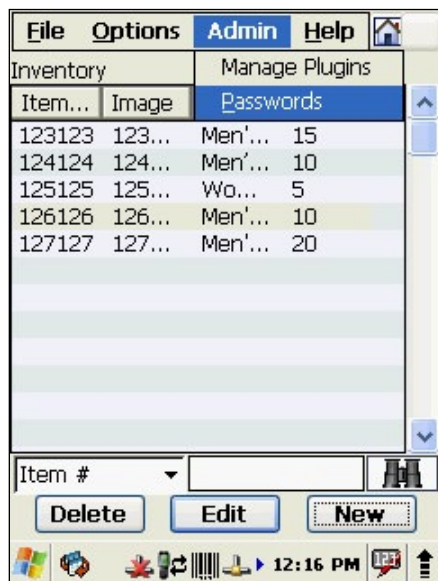


Figure 10
The Admin->Password Menu.
(Windows CE shown)

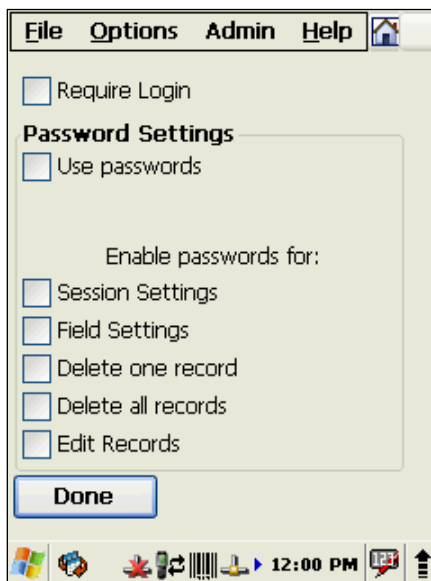


Figure 11
The Password Setting screen.
(Windows CE shown)

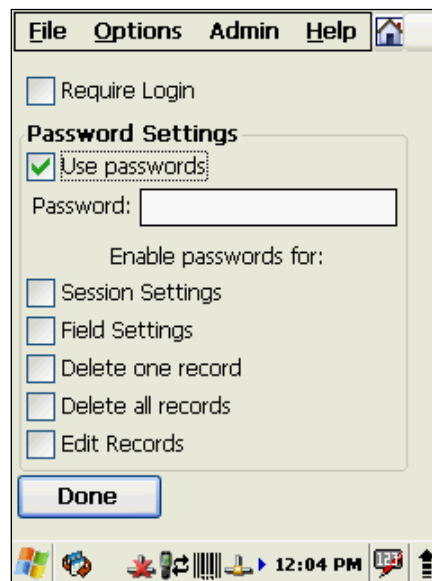


Figure 12
The Password Setting screen
With Use Passwords Enabled.
(Windows CE shown)

Transferring Data Between the Device and Database

If you already have a database containing your existing inventory and pricing information, PTS provides three options for easily syncing with that data (sold separately). Data can also be manually imported and exported without requiring additional software.

For transferring data between most database systems by connecting the device with a USB cable, use [TracerPlus ODBC Link](#).

If Microsoft Excel is being used as a back-end database, Use [TracerPlus Connect for MS Excel](#).

If real-time connectivity is needed with continuous updates over the course of the work day, use [TracerPlus Wireless Server](#).

Manual Data Transfer

Importing Data to the Honeywell 6000 series device

TracerPlus Easy Retail uses **tab-delimited** text files to transfer data. Almost all database programs can export data to this file type by choosing the **Export Data** option. Check your database software manual for additional information.

1. After exporting the data file for the database, rename the **.txt** file as follows: **S04_data_auto.txt**.
2. Copy the file to the following location on the device:
Computer\Device\\My Documents\TracerPlus\Data\For_Import
3. Launch **Easy Retail**.

Exporting Data to the Database

1. Launch **Easy Retail** and select **Export Data** from the **File** menu.
2. Connect the device to the host PC via ActiveSync (or WMDC).
3. This transfer can be partially automated with ActiveSync/WMDC. This will place a text file with updated data into a pre-determined folder on the host PC.
4. If the process has not been set up, locate the exported files here:
Computer\Device\\My Documents\TracerPlus\Data\Exported
5. Copy the files to the host PC, then import to the database via the database software's import function.

The different files created when exporting data from the device will provide different information. This information is designed to be imported into different backend database table. The information provided is as follows:

S02_data.txt : Provides a history of the latest round of price changes completed on the device.

S03_data.txt : Provides the inventory count performed on the device for comparison to expected quantity.

S04_data.txt : The overall items list that is updated by actions performed on the device.

Sample Barcodes



123123



126126



124124



127127



125125

Additional Resources

Online information about **TracerPlus Easy Retail** can be found [here](#).

The **TracerPlus Easy Retail** application was created using **TracerPlus Desktop** and runs on the **TracerPlus Professional** platform. For more in-depth information on TracerPlus Professional, visit www.ptshome.com to download the **TracerPlus Professional** User Guide. [Click here](#) for a direct download of the PDF.

Additional help is also available by purchasing a one-on-one web training sessions and paid support contracts. For information on training, contact PTS at sales@ptshome.com. For details about **PTS Comprehensive Support Plans**, visit: www.ptshome.com/mobile_software_support.html

Protect your investment with Honeywell's **Service Made Simple** repair service. Features include:

- 3 year or 5 year coverage plans
- Three-Day Turnaround Promise
- Full Comprehensive Coverage
- Value-Add Maintenance Included - Devices will receive any pending engineering changes such as firmware upgrades during the repair process at no cost
- Repaired to original factory specifications

[Click here](#) for more info.



Portable Technology Solutions

221 David Court
Calverton, NY 11933

www.ptshome.com