

MC319Z

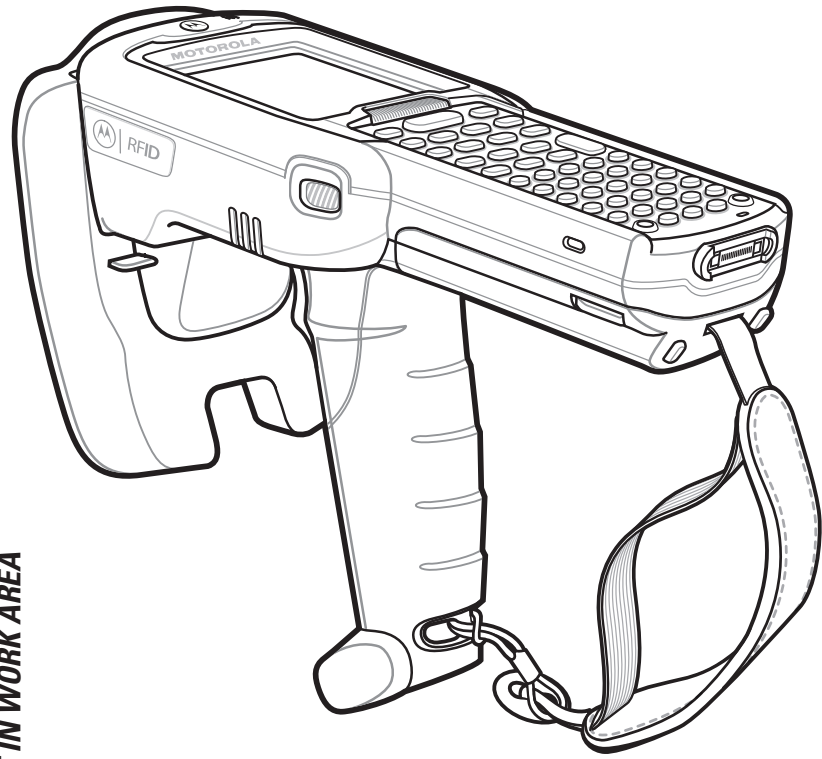
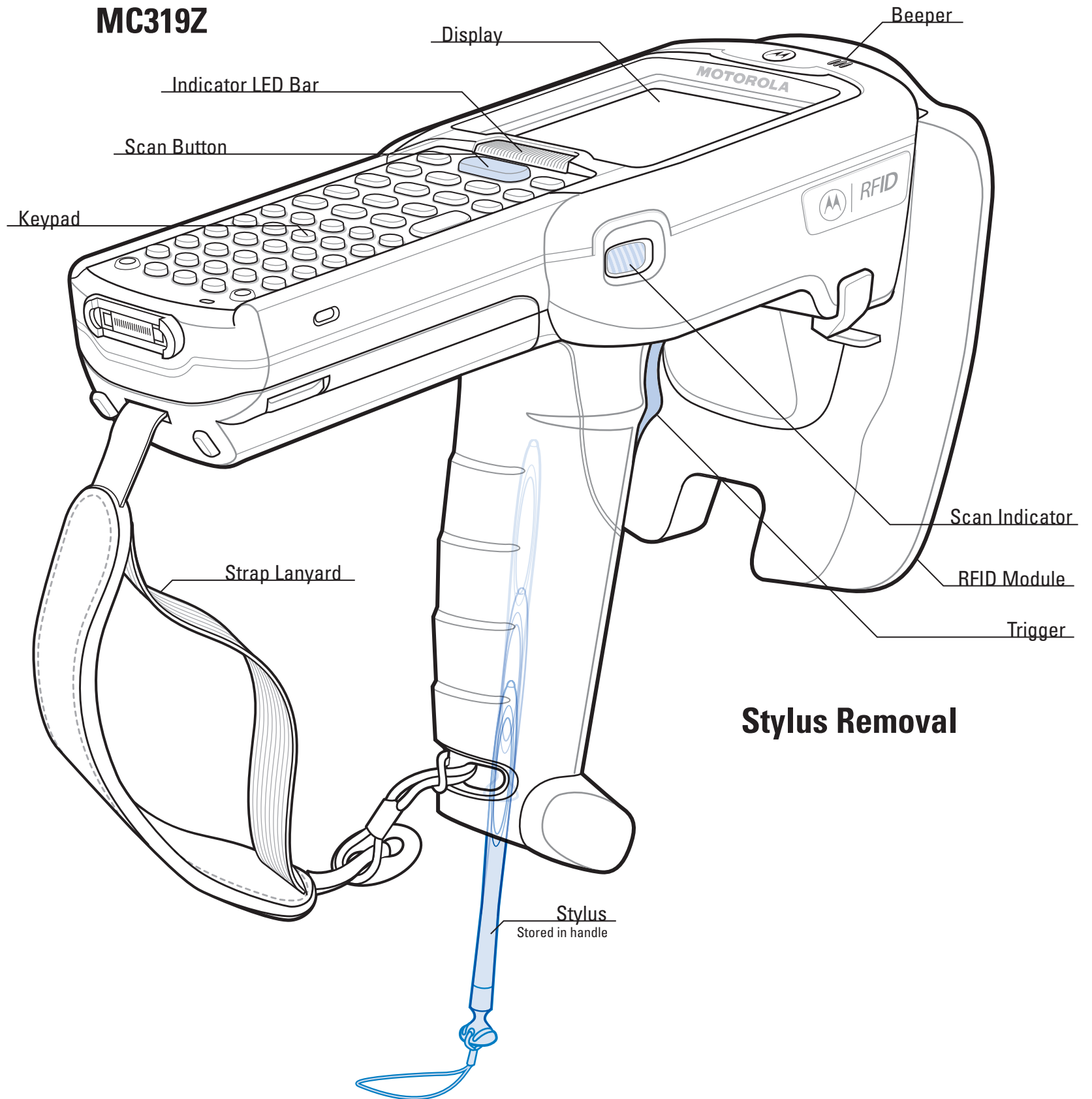
Quick Start Guide



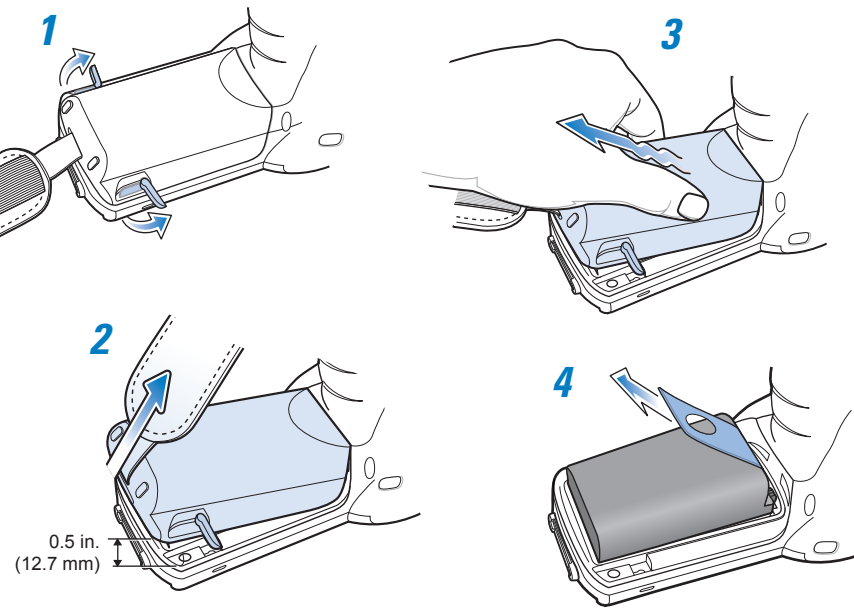
<http://www.motorola.com/mc3000>
See User Guide for more information

FEATURES

MC319Z

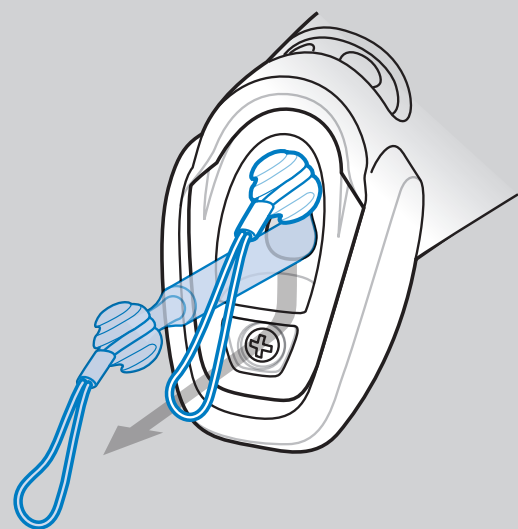


Battery Removal

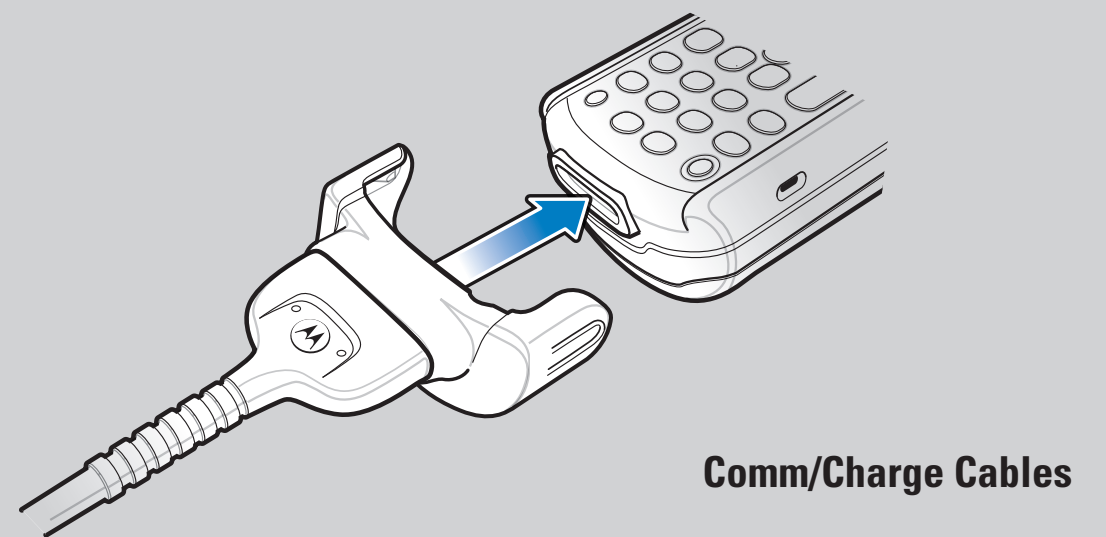


Stylus Removal

STYLUS REMOVAL

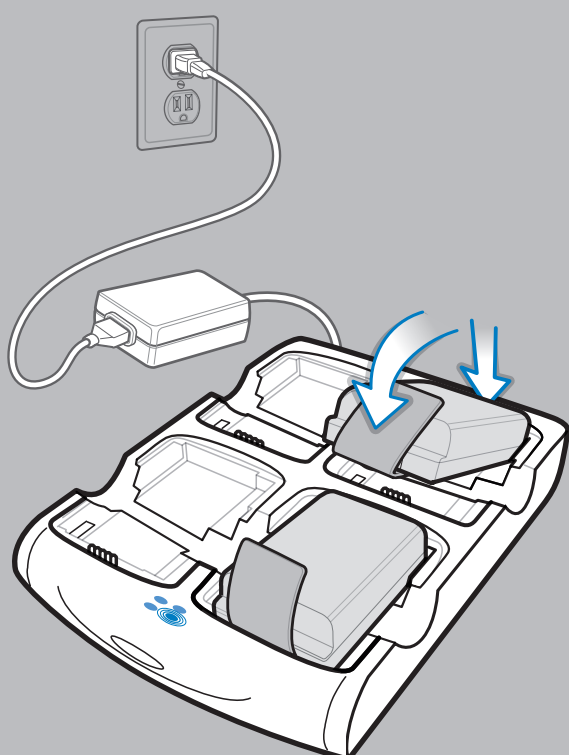


ACCESSORY INSTALLATION



CHARGING INSTRUCTIONS

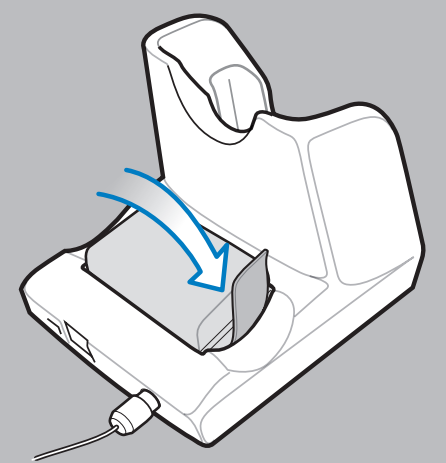
⦿ = LED Indicator Location | Slow Flash = Normal Charge | Solid Amber = Full Charge | Fast Flash = Charging Error



Four Slot Spare Battery Charger

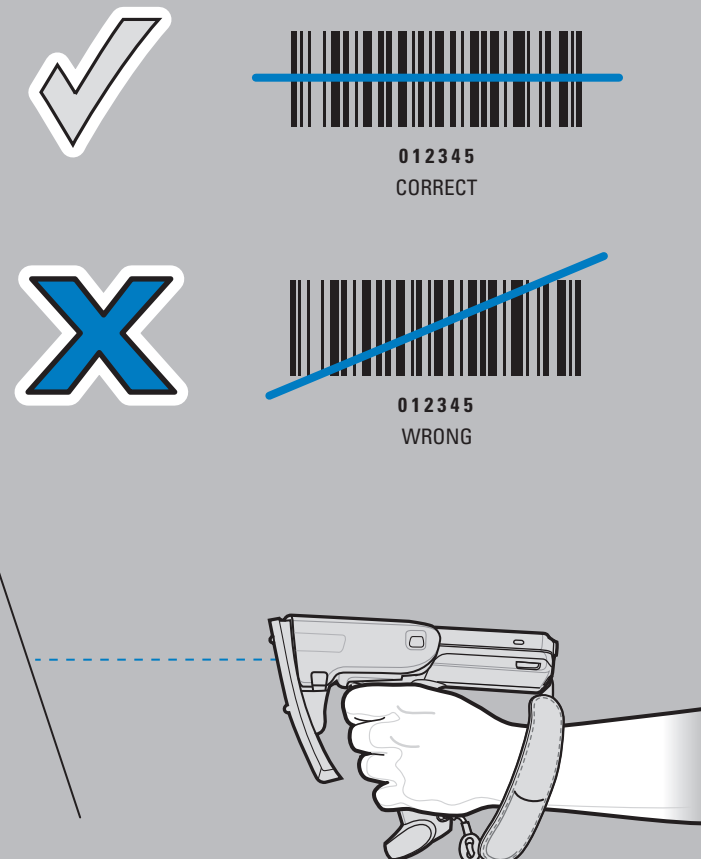
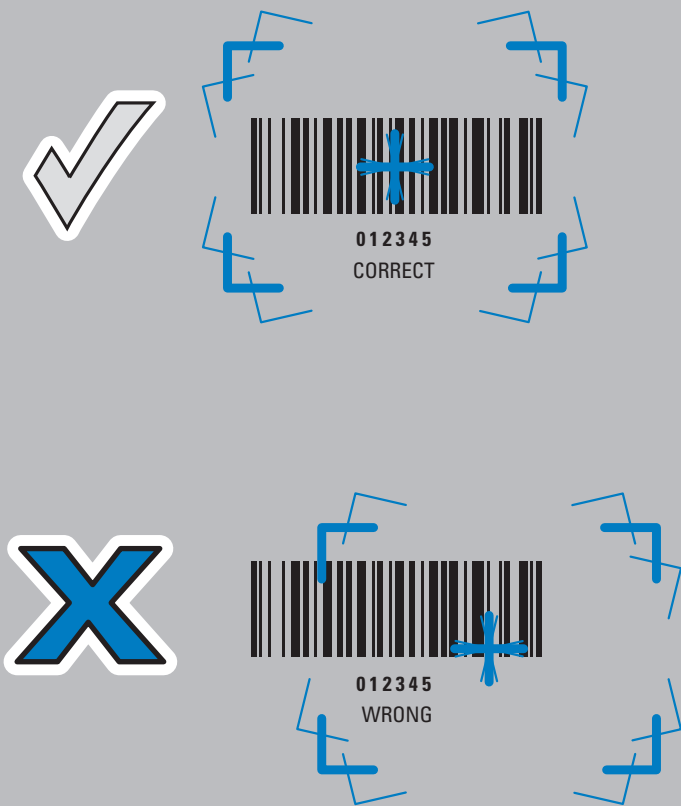
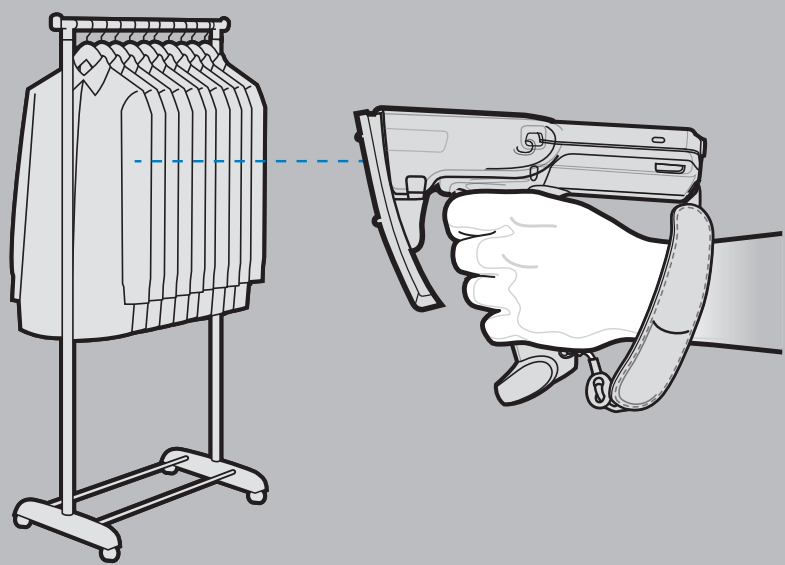


Single Slot Serial Cradle



OPTIMUM RFID TAG DECODING

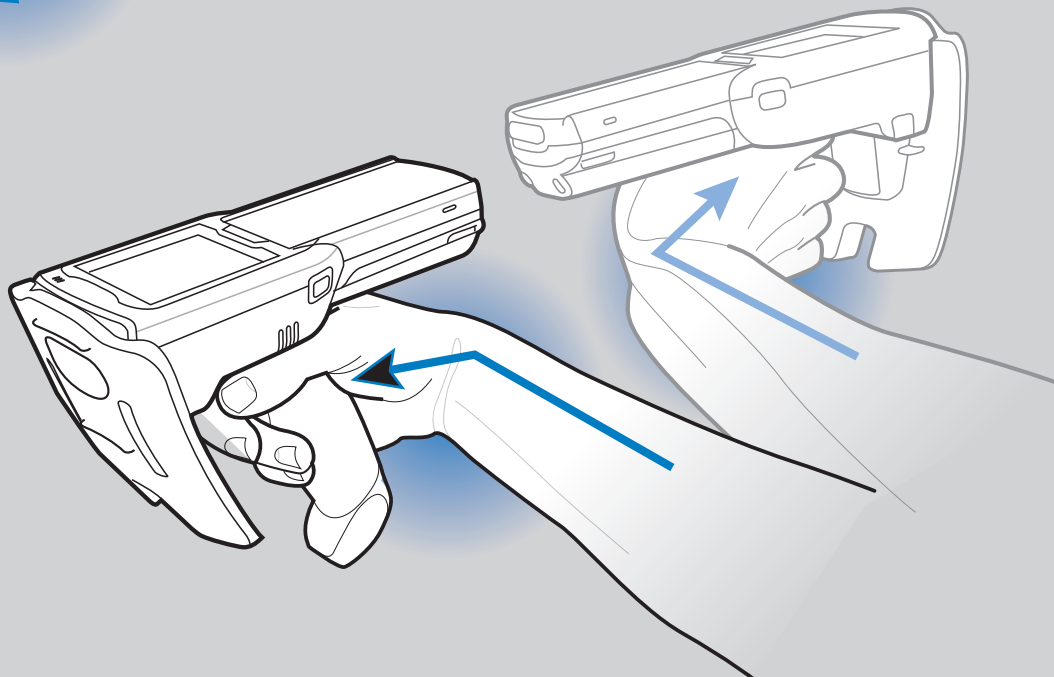
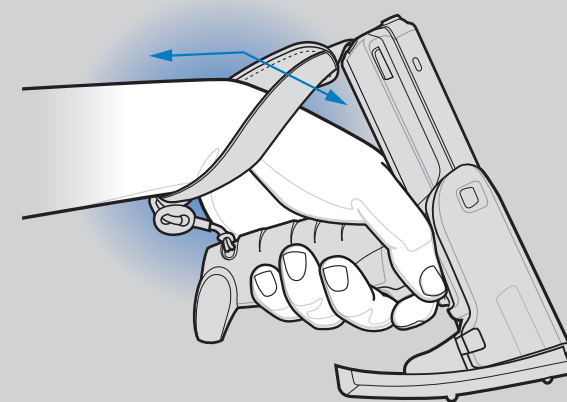
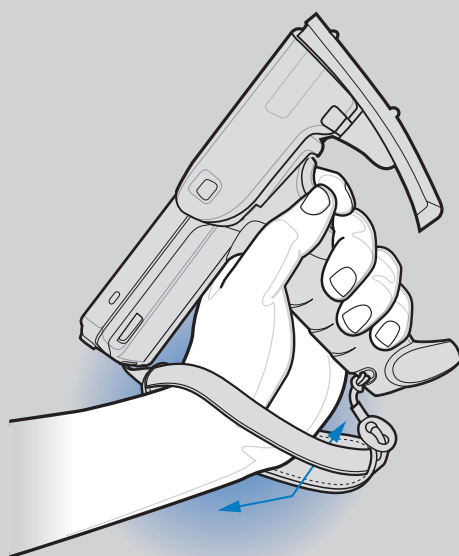
OPTIMUM SCANNING POSITIONS



ALTERNATE LEFT AND RIGHT HANDS
TAKING BREAKS AND TASK ROTATION RECOMMENDED

OPTIMUM UPRIGHT BODY POSTURES

AVOID EXTREME WRIST ANGLES



OPTIMUM BODY POSTURE

Optimum Body Posture for Low Scanning

Alternate left and right knees



Alternate left and right hand

Optimum Body Posture for High Scanning



Use a ladder

Taking breaks and task rotation recommended

Local Contact: _____

POST IN WORK AREA



Motorola Solutions, Inc.
One Motorola Plaza Holtsville, New York 11742-1300, USA
MOTOROLA, MOTO, MOTOROLA SOLUTIONS and the Stylized M Logo are trademarks or registered trademarks of Motorola Trademark Holdings, LLC and are used under license. All other trademarks are the property of their respective owners. © 2011 Motorola Solutions, Inc. All rights reserved.



72-146160-01 Revision A - January 2011



<http://www.motorola.com/mc3000>

MC319Z

Recommended Usage Guide