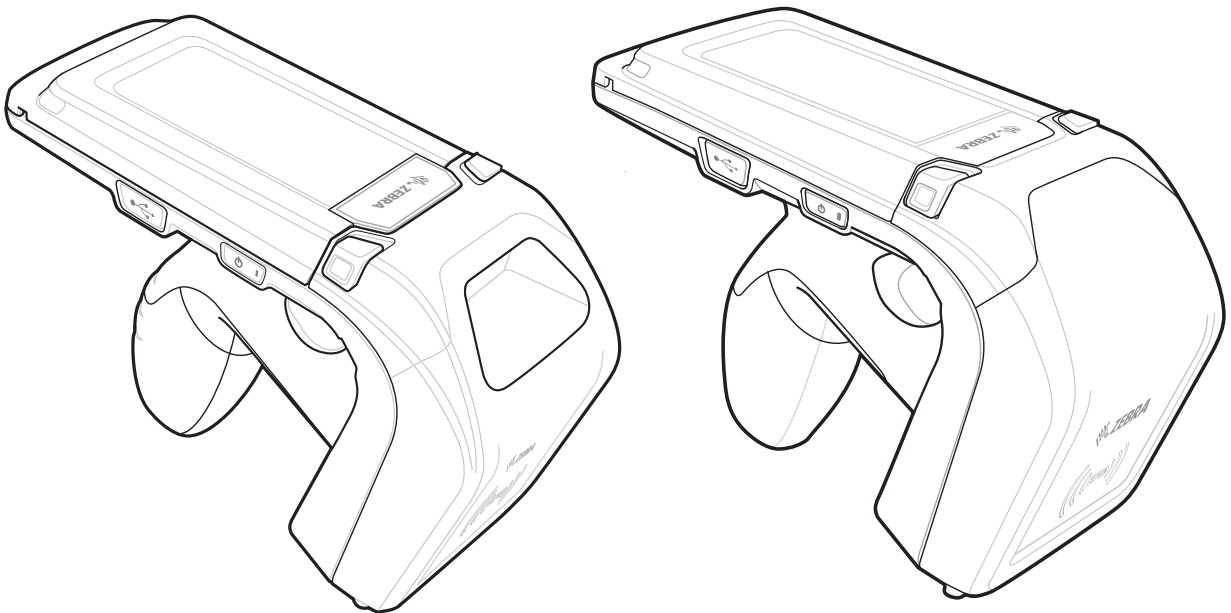


RFD8500

QUICK START GUIDE



Zebra reserves the right to make changes to any product to improve reliability, function, or design.

Zebra does not assume any product liability arising out of, or in connection with, the application or use of any product, circuit, or application described herein. No license is granted, either expressly or by implication, estoppel, or otherwise under any patent right or patent, covering or relating to any combination, system, apparatus, machine, material, method, or process in which Zebra products might be used. An implied license exists only for equipment, circuits, and subsystems contained in Zebra products.

Warranty

For the complete Zebra hardware product warranty statement, go to: <http://www.zebra.com/warranty>.

Service Information

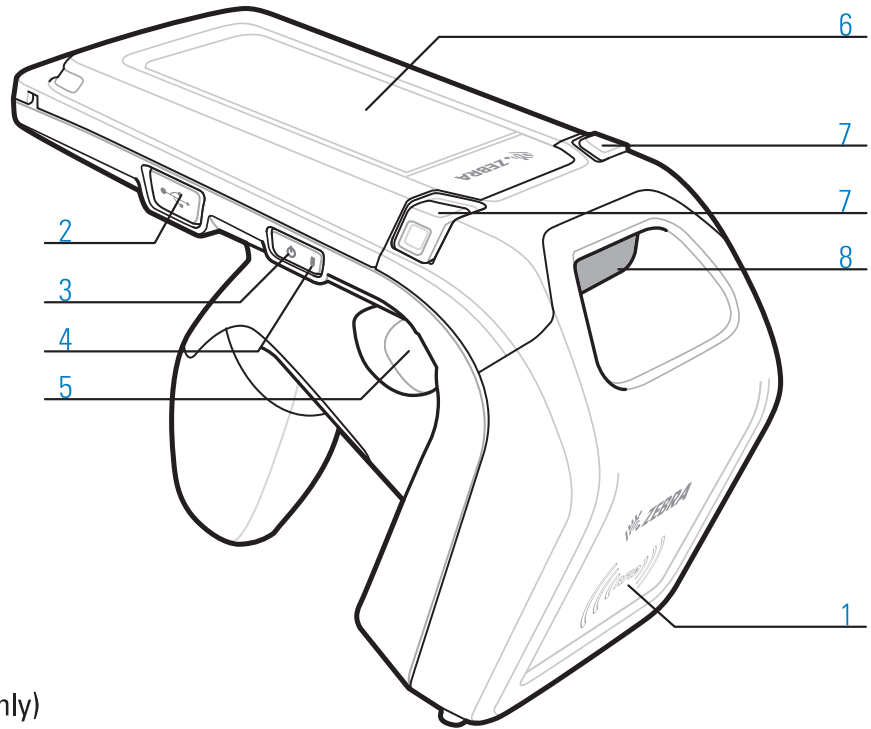
If you have a problem using the equipment, contact your facility's Technical or Systems Support. If there is a problem with the equipment, they will contact the Zebra Global Customer Support Center at: <http://www.zebra.com/support>.

For the latest version of this guide, localized translations, and related product guides, visit the Zebra website at: <http://www.zebra.com/support>.

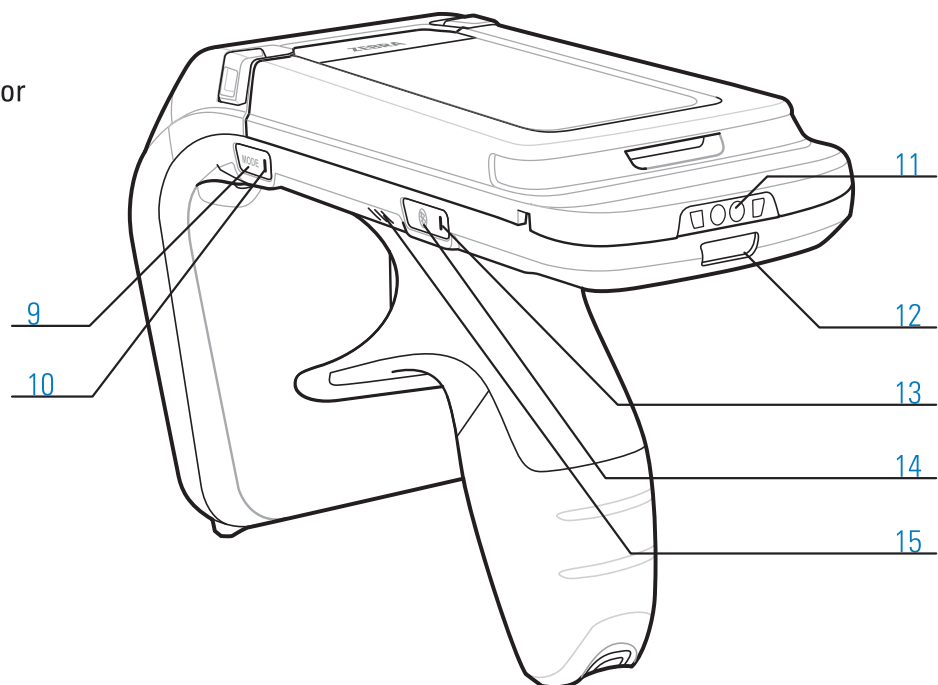
Introduction

The RFD8500 reader provides Radio Frequency Identification (RFID), with optional bar code scanning functionality. The unit can be used stand alone, or paired with a Bluetooth® wireless technology enabled host device (such as a mobile computer and/or smartphone).

Features



- 1 RFID Antenna Compartment
- 2 USB Port
- 3 Power Button
- 4 Power/Charging Indicator
- 5 Trigger
- 6 Battery Cover/Compartment
- 7 Battery Cover Release Buttons
- 8 Imager Window (imager units only)
- 9 Mode Button
- 10 Mode Indicator
- 11 Charging Contacts
- 12 Decode/RFID Read Indicator
- 13 Bluetooth Indicator
- 14 Bluetooth Button
- 15 Beeper



Using the RFD8500

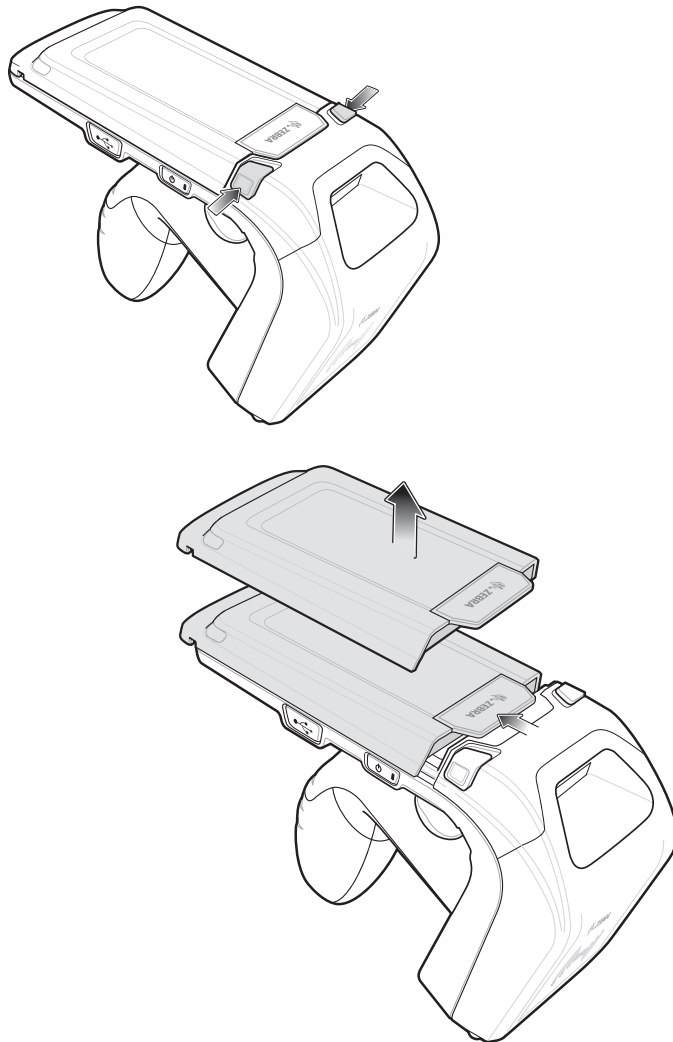
To use the RFD8500 for the first time with a mobile computer, or iOS device:

- Install the battery.
- Charge the RFD8500.
- Power on the RFD8500.
- Pair the RFD8500 over Bluetooth with a mobile device.
- Install the Demo Application, or the partner application (Android or iOS).
- Set the region and power level (using the Demo Application, or the partner application).

Installing the Battery

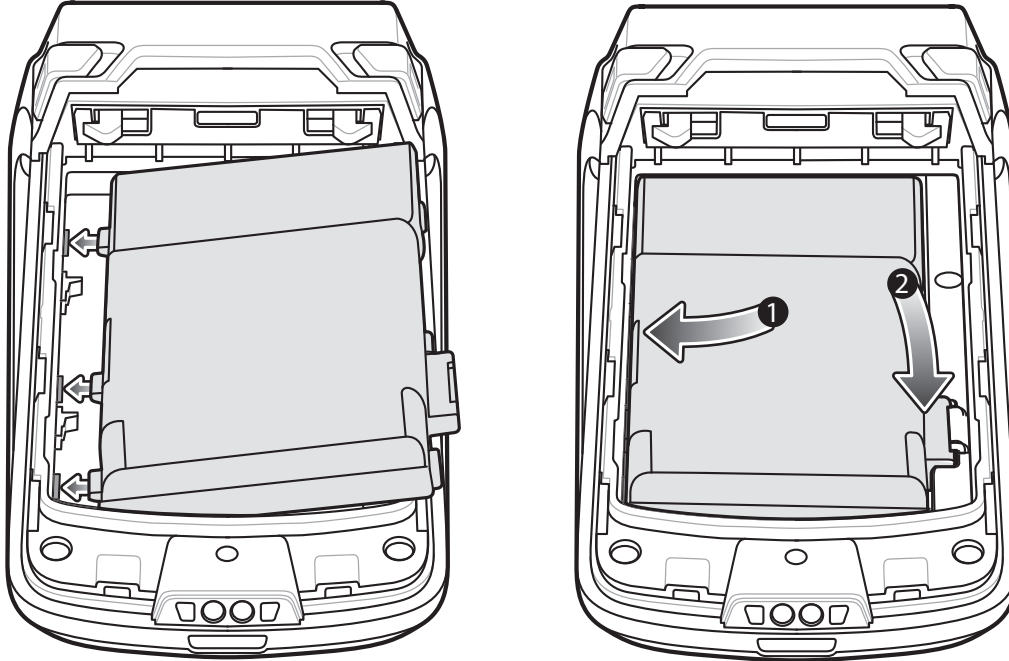
Removing the Battery Cover

1. Depress both battery cover release buttons.
2. Slide back, and remove battery cover.



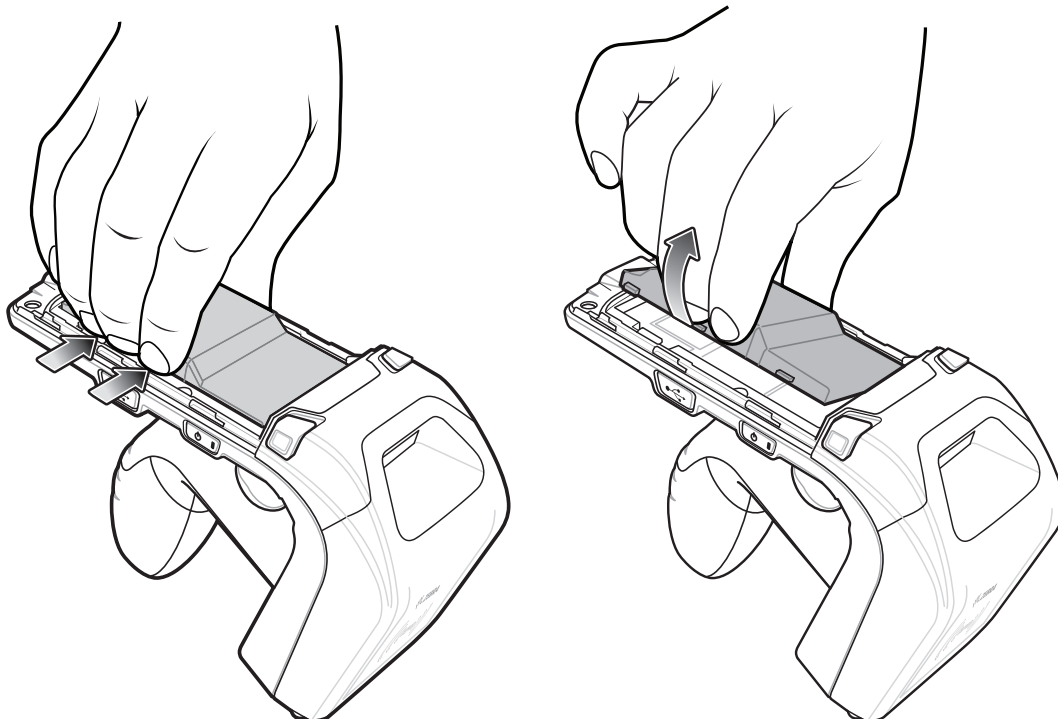
Inserting the Battery

1. Align the three tabs on the bottom of the battery with the three slots in the battery compartment.
2. Press battery towards three battery slots then press down until it locks into place.



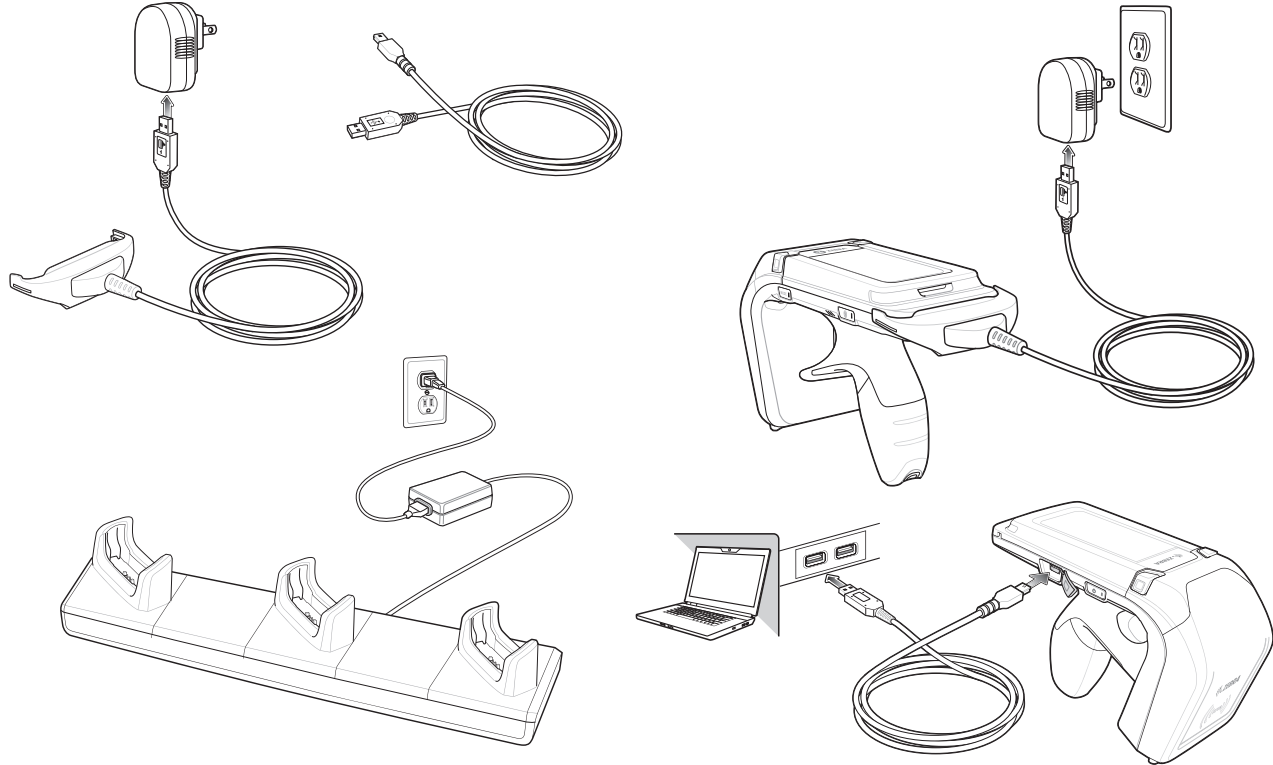
Removing the Battery

Press in and remove battery as shown.



Charging

Before using the RFD8500 for the first time, charge the battery until the LED Power/Charging Indicator turns solid green. To charge the RFD8500, use the Micro USB cable, cup charger, or cradle. The Three Slot Charge Only cradle can be used to charge any combination of devices including the RFD8500, TC55, and a dual battery charger.



Pairing

Pairing with an Android Device

To pair with an Android device, such as the TC55:

1. Power on the TC55.
2. Touch the Settings icon.
3. Turn Bluetooth on.
4. Touch Search for Devices to display available discoverable devices.
5. Turn the RFD8500 on and ensure Bluetooth is enabled. If not, press the Bluetooth button on the RFD8500 for one second to make it discoverable. When discoverable, the Bluetooth LED slowly flashes blue.
6. Touch the RFD8500 in the list of available discoverable devices, and press the RFD8500 trigger to pair when the Bluetooth LED starts flashing fast.
7. Exit the TC55 Device Settings screen, and run the RFID Demo Application.
8. From the Demo Application, select Settings > Readers List, and confirm the RFD8500 serial number with which you paired is displayed. Select it in the list of Available Readers to connect the RFD8500 to the TC55.

Pairing with an iOS Device

To pair with an iOS device, such as the iPhone 6:

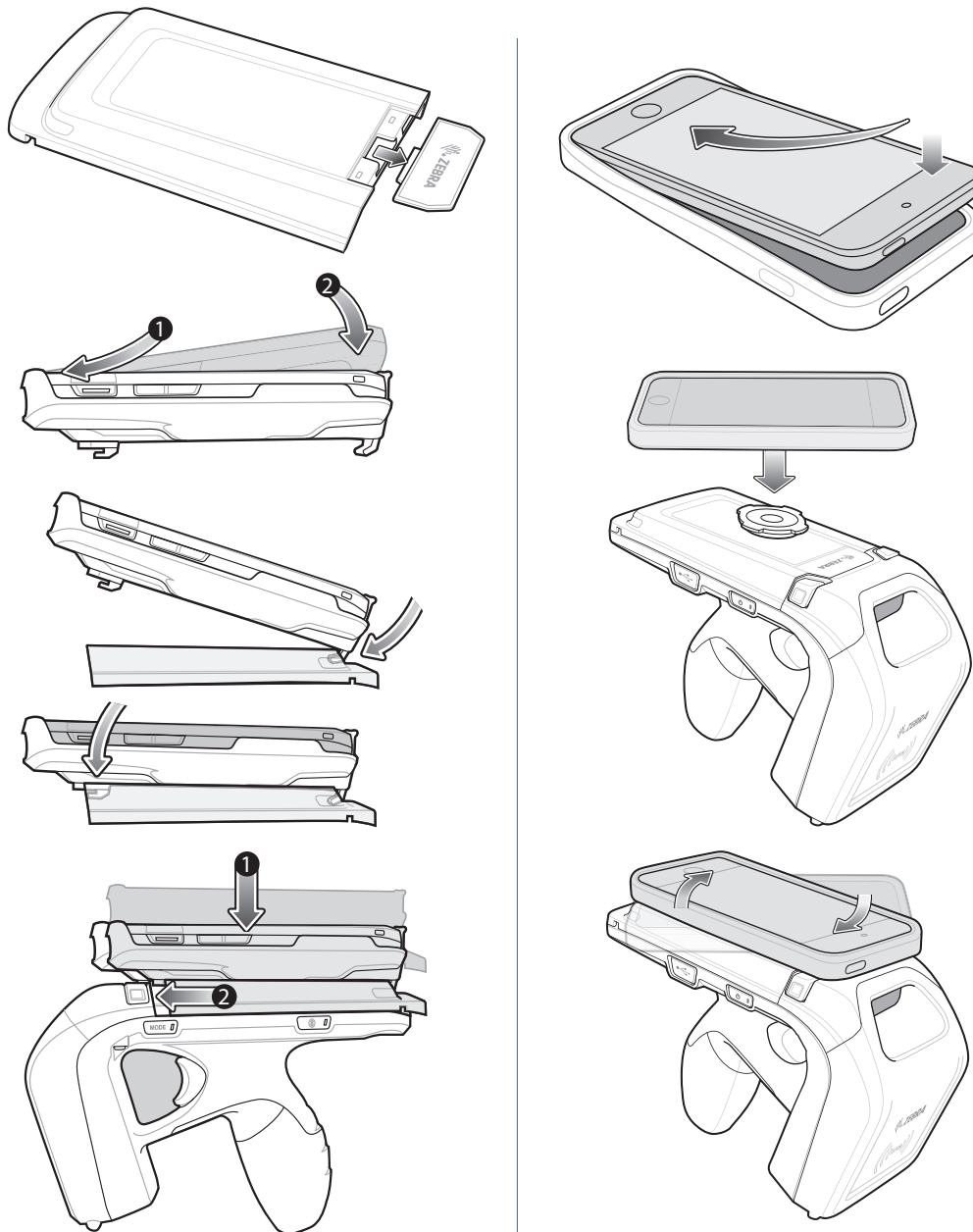
1. Power on the iOS device.
2. Touch the Settings icon.
3. Touch Bluetooth to display the Bluetooth Settings screen, and ensure it is on.
4. Turn the RFD8500 on and ensure Bluetooth is enabled. If not, press the Bluetooth button on the RFD8500 for one second to make it discoverable. When discoverable, the Bluetooth LED slowly flashes blue.
5. Touch the RFD8500 in the list of available discoverable devices, and press the RFD8500 trigger to pair when the Bluetooth LED starts flashing fast.
6. Exit the iPhone Device Settings screen and run the RFID Demo Application.
7. From the Demo Application, select Settings > Readers List and confirm the RFD8500 serial number with which you paired is displayed. Select it in the list of Available Readers to connect the RFD8500 to the iPhone.

Using the Locate Device Bar Code

The Locate Device bar code appears on the RFD8500 under the antenna compartment. When you pair several RFD8500 devices with your Android or iOS device via Bluetooth, use the serial number represented by the Locate Device bar code to identify a specific paired RFD8500.

Inserting the Mobile Computer into the RFD8500

Remove the RFD8500 battery cover. Remove the plastic tip from the cover. Attach the mobile computer to its case accessory. Attach the mobile computer case to the RFD8500 battery cover. Slide the battery cover onto the RFD8500 until it locks in place. The battery cover buttons secure the mobile computer to the RFD8500.



Removing the Mobile Computer from the RFD8500

To remove the mobile computer, press the battery cover release buttons, and pull the mobile computer back and up.

LED/Beeper Indicators

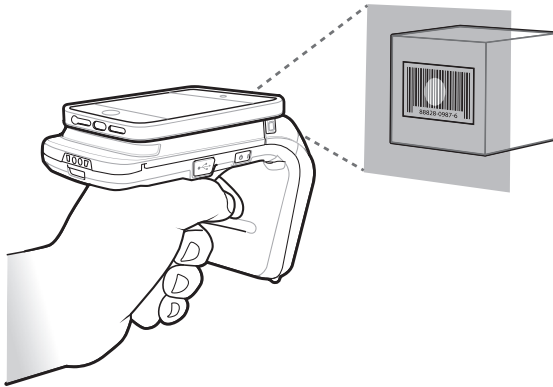
Condition	Power LED	Beeper
Power State Indicator (Power Button)		
Low battery (20%)	Solid amber	No beep
Lower battery (equal to, or less than 10%)	Solid red	Short beep sounds repeat ONLY when the device is NOT connected to a charger AND when the unit is active (not in low power mode, or off mode)
Critical battery (less than 5%)	Solid red, then turns off	Descending high/medium/low beeps before automatically powering off
Charging	Blinking amber	Short beep when charger is connected
Charged	Solid green	One beep
Charging error	Fast blink red	One beep, or repeated beeps
Power on	<ul style="list-style-type: none"> Green if battery charge > 20% Amber if battery charge between 10% - 20% Red if battery charge < 10% 	Low/medium/high beeps
Mode Indicator (Mode Button)		
RFID mode	Off	Short high button confirmation beep
Bar code mode	Solid green	Short high button confirmation beep
Decode/RFID Read Indicator		
Good decode	Solid green	Short low beep
Transmit error	Solid red for 2 seconds	No beep for RFID/four beeps for scanner read
Good RFID read	Solid green (for each read)	Short medium beep
RFID error	Solid red	No beep
Other error message	Solid red	No beep
BT Indicator (BT Button)		
BT turning off	Off	Long beep

Condition	Power LED	Beeper
BT on/not connected	Off	No beep
BT discoverable	Medium flash (40 seconds only)	No beep
BT on/pairing in process	Fast flash	No beep
BT application connected	Solid blue	Short low/high beeps
BT out of range	Slow flash (40 seconds only)	Short high/low beeps

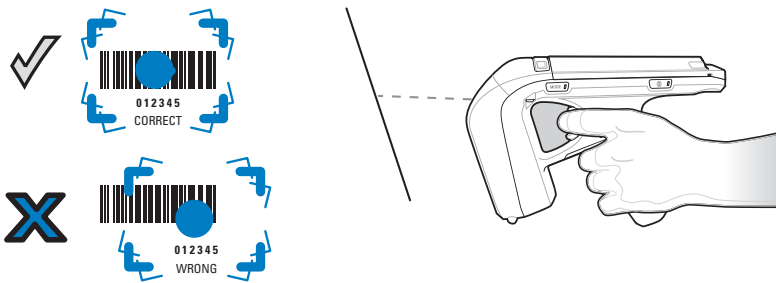
Scanning with the RFD8500 (Imager Units Only)

To scan bar codes:

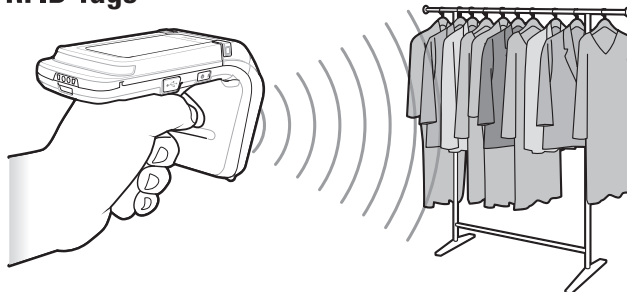
1. Set the RFD8500 to bar code mode.
2. Aim the device at the bar code.
3. Press the trigger on the handle. The scan/decode LED lights, and a beep sounds to indicate a successful decode.



Optimum Scanning Positions

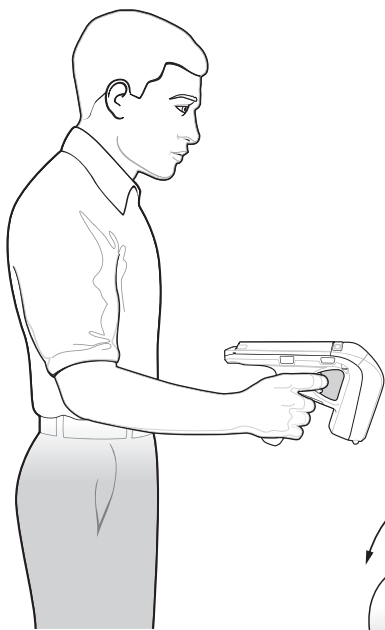


Reading RFID Tags



Optimum RFID Body Posture

**Optimum Upright
Body Posture**



**Optimum Body Posture
for Low Scanning**



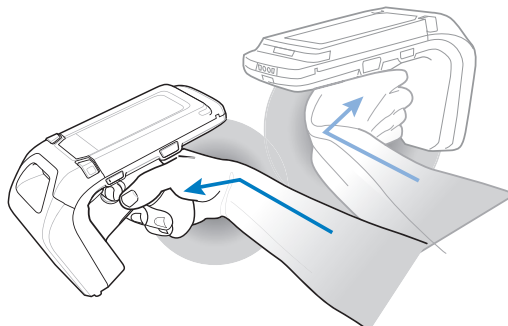
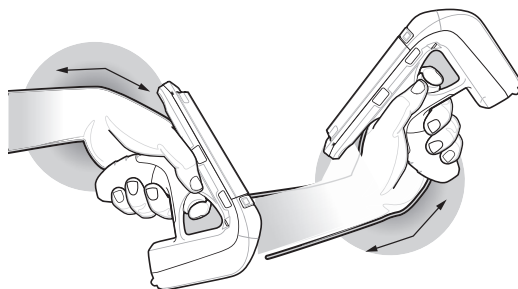
**Optimum Body Posture
for High Scanning**



Taking breaks and task rotation recommended



Alternate left
and right hand





Zebra Technologies Corporation
Lincolnshire, IL U.S.A.
<http://www.zebra.com>

Zebra and the stylized Zebra head are trademarks of ZIH Corp., registered in many jurisdictions worldwide. All other trademarks are the property of their respective owners.

©2015 ZIH Corp and/or its affiliates. All rights reserved.



